

# Cherry Lane Newsletter

Issue 3 W/E 4<sup>th</sup> October 2024

View our virtual tour <https://cherrylane.hillingdon.educatedmedia.co.uk/virtual-tour/>

## Dates for the Diary

**Monday 7<sup>th</sup> October** – Individual and Sibling photos

**Tuesday 8<sup>th</sup> October** - Individual and Sibling photos

**Monday 7<sup>th</sup> - 9<sup>th</sup> October** – Harvest collection

**Monday 14<sup>th</sup> October** – Science show at ExCel (Invited Children Only)

**Monday 14<sup>th</sup> October** – Dental nurse visit for Badgers



Our lovely British weather has changed for the worst ☹️ Please make sure you send your child into school with a coat or jacket.

## School photo day

School photos are taking place on 7<sup>th</sup> and 8<sup>th</sup> October. Please send your children in

**full correct school uniform\*** and of course their best smiles

**\*If it is normally your child's PE day, please send them in with their PE kits in bags, and they will change at school.**





**A message from our kitchen: There is a lot of food going to waste. Please check with your child when ordering, that they like what is being offered. Also when a hot dinner has been ordered and a packed lunch is supplied that meal is then wasted. If your child wants a packed lunch, PLEASE DO NOT order a hot meal.**



Dear Parents/Carers

We are holding our annual harvest festival on Wednesday 9<sup>th</sup> of October 2024. This is a time when we like to help those less fortunate than ourselves, by providing food and other necessities. It would therefore be greatly appreciated if each child could bring in a small donation. The food bank is especially looking for;

- Toiletries
- Washing up liquid
- Jam/honey
- Rice pudding
- Custard
- Tinned fruit
- Sugar (500g or 1kg)
- Microwave rice packets
- Tinned meat/fish
- Pasta sauce
- Tinned potatoes
- Tinned Vegetables
- Instant coffee
- Long life milk
- Tinned Soup
- Fruit squash
- Tinned Pulses
- Dried noodles
- Tinned spaghetti
- Long grain rice



Please ensure there are no perishable items and all items are in date. This food will be given to the West Drayton and Yiewsley Food Bank. We will begin collecting food from Monday 7<sup>th</sup> October till the 9<sup>th</sup>, please send the food to your child's classroom.

Thank-you for your generosity!

## Instrumental and Vocal Tuition with Hillingdon Music Service

Learning to sing or play an instrument can help concentration, confidence and coordination as well as being great fun!

If your child goes to a school in the borough or lives in the borough, we can arrange for them to have music lessons during the school day at their school, or on some occasions, at one of our centres at various locations across the borough. Lesson times are set by the school and our teachers to fit with their timetables so exact lesson times will vary from school to school. We aim to deliver 10 lessons each term.

To find out more and watch demonstration videos about these lessons visit [www.hillingdon.gov.uk/startmusic](http://www.hillingdon.gov.uk/startmusic)

Tuition is available on a range of instruments including woodwind, brass, strings, drum kit, piano, guitar and voice.

There is also the opportunity to play and sing with others in choirs, bands, orchestras, ukulele and steel pan groups. See more at <https://www.hillingdon.gov.uk/musicsschool>

Fees and charges are available on our website, including reduced charges for those who are unable to meet the cost.



### Are you a parent/guardian with a child between the ages of 5-11?

We want to learn more about the challenges and difficulties when feeding your children healthy foods during the Cost-of-Living Crisis



If you are interested in taking part in an interview, please email:

[Hannah.froome@brunel.ac.uk](mailto:Hannah.froome@brunel.ac.uk)

**£15 voucher for taking part!**

This study is being conducted by a doctoral researcher and has been approved by the College of Health, Medicine, and Life Sciences Research Ethics Committee (Brunel Research Ethics Approval: 44814-MHR-Jun/2024- 51239-3)

## Late Arrivals and Collections

Our school day starts for Years 3-6 at 8.45am. Reception and Years 1 & 2 start at 8.50am.

**If your child is late to school, please make sure they come to the main reception, so they can be signed in.**

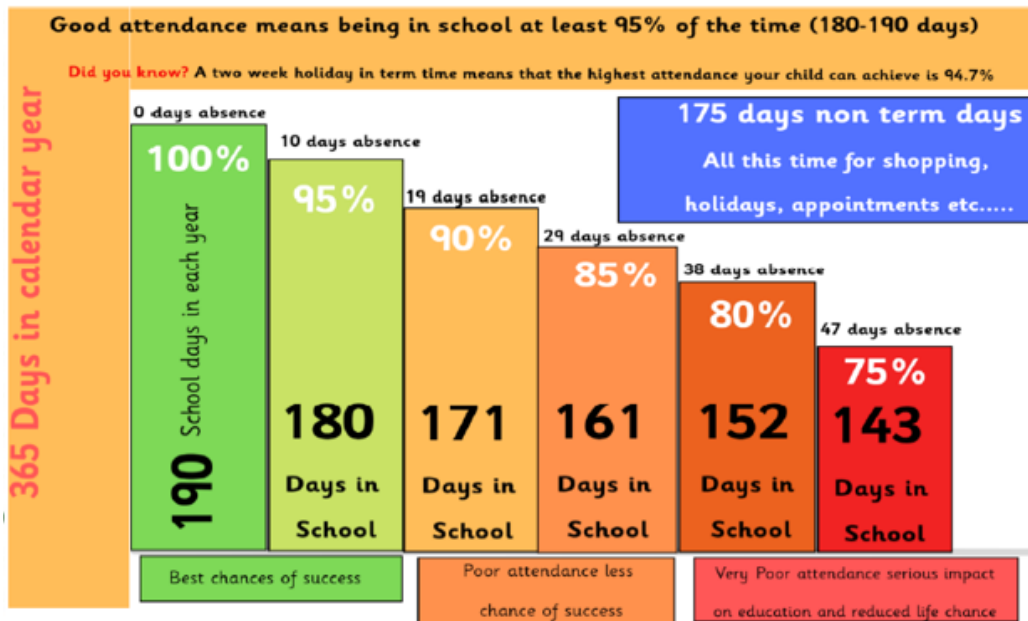
**Learning starts at this time.**

Arriving late will mean;

- Your child will miss out on important learning, which may affect their achievements.
- They don't get social time to settle into the class.
- It can be embarrassing for them.
- It may disrupt the learning of the rest of the class.

Reception, Y1 and Y2 finish at 3.20pm and Y3-6 finish at 3.25pm. Please make sure you are here on time to collect your child.

**If you are running late, please call the school office so we can let the teacher know. If you are persistently late to collect your child, they will be placed into afterschool club and you will be charged.**



## Holiday requests during Term Time

A reminder to all parents that all holidays taken within school time will be unauthorised. We ask all parents to be mindful that taking a pupil on leave during term time interrupts teaching and learning and will disrupt a child's educational progress.

Requests should be made at least 4 school weeks in advance of the proposed absence, by completing a 'Leave of Absence' request form, explaining why the leave is essential and the reasons why it needs to take place during term time. This form is available from the school office.

# CONGRATULATIONS WELL DONE!

W/E 04/04/24



## Attendance

Reception – Hedgehogs 95%

KS1 – 2Z 97%

KS2 – 6F 98%

## Walking Bear (KS1)

1st – 2Z

## Walking to school trophy (Year 3-5)

1st – 3C & 4G

## Walking to school trophy (Year 6)

1st – 6S

## Bookworms (KS1)

KS1 – 1V

## Super Stepper Winner

Reception / KS1 – 2M

KS2 – 6S

## Housepoints

# Syon





# SCHOOL TERM AND HOLIDAYS FOR THE SCHOOL YEAR 2023/2024

## Autumn Term - 2024

|                  |  |
|------------------|--|
| Training Day:    | Monday, 2 <sup>nd</sup> September (school closed to pupils)          |
| Autumn 1 starts: | Tuesday, 3 <sup>rd</sup> September                                   |
| Half term:       | Monday, 28 <sup>th</sup> October to Friday, 1 <sup>st</sup> November |
| Training Day:    | Monday, 4 <sup>th</sup> November (school closed to pupils)           |
| Autumn 2 starts: | Tuesday 5 <sup>th</sup> November                                     |
| Term ends:       | Friday, 20 <sup>th</sup> December @2pm                               |

## Spring Term - 2025

|                  |  |
|------------------|--|
| Spring 1 starts: | Monday, 6 <sup>h</sup> January   |
| Half term:       | Monday, 17 <sup>th</sup> February to Friday, 21 <sup>st</sup> February |
| Spring 2 starts: | Monday 24 <sup>th</sup> February                                       |
| Term ends:       | Friday, 4 <sup>th</sup> April  |

## Summer Term - 2025

|                  |  |
|------------------|--|
| Summer 1 starts: | Tuesday 22 <sup>nd</sup> April                               |
| Half term:       | Monday, 26 <sup>th</sup> May to Friday, 30 <sup>th</sup> May |
| Summer 2 starts: | Monday 2 <sup>rd</sup> June                                  |
| Term ends:       | Tuesday 22 <sup>rd</sup> July                                |

**(3 additional Teacher Training Days are to be confirmed)**

## Bank Holidays

### 2024

Christmas Day: Wednesday, 25<sup>th</sup> December  
Boxing Day: Thursday, 26<sup>th</sup> December

### 2025

New Year's Day: Wednesday, 1<sup>st</sup> January  
Good Friday: Friday 18<sup>th</sup> April  
Easter Monday: Monday, 21<sup>st</sup> April  
May Day Bank Holiday: Monday, 5<sup>th</sup> May  
Spring Bank Holiday: Monday 26<sup>th</sup> May  
Summer Bank Holiday: Monday 25<sup>th</sup> August

**HOLIDAYS ARE NOT AUTHORISED DURING TERM TIME**



## KEY CONTACTS

Head Teacher: Miss Tranter

Reporting an absence – Choose telephone option 1

Welfare – Mrs Ramsay – Choose telephone option 2

Admissions – Mrs Haddad – Choose telephone option 3

Business Manager – Mrs Sondi – Choose telephone option 4

To speak to main office please hold

If you wish to make an appointment to see a teacher, please contact the school office.