

Cherry Lane Newsletter

Issue 26 W/E 07th June 2024

View our virtual tour <https://cherrylane.hillingdon.educatedmedia.co.uk/virtual-tour/>

Dates for the Diary

Monday 10th June - Nursery, Year 6, Team Photos

Thursday 13th June - Year 5 science museum trip

School Trips

All of your children's school trips are now available to pay for via their parent pay account. You will see that the prices have increased quite a lot from last year. With this in mind we have given you an option of paying in instalments with a reducing balance. We appreciate that all trips are a voluntary contribution, however we cannot go ahead with the trip if we do not have enough money to cover the cost of the coaches and entry fees. If you have any concerns over paying for your child's trip please speak to the school office.



Year 5 Trip

Year 5 Science Museum trip is next week. So far we have received 60% of payments. Please can parents try their best to make payment/contribution before Monday 10th June.

Consent forms need to be submitted in order for your child to attend the trip. If we do not receive the consent form, your child will remain at school.

The deadline to order your child a school pack lunch has now ended. If no order was place YOU MUST provide a packed lunch from home.

Hillingdon Children's Centres

WHAT DO WE OFFER TO FAMILIES?

TRANSITION PROGRAMME: supporting you with your child when they start school or childcare.

BEHAVIOUR STRATEGIES: Advice and strategies on how to deal with your child's behaviour.

FUSSY EATING: Is your child a fussy eater?

2-YEAR-OLD FUNDING ADVICE

DUCKLINGS: Online course to support parents with a child newly diagnosed with ASD or awaiting assessment with CDC.

FAMILY SUPPORT: Support and advice for parents with children under 5 years for any concerns related to their development, behaviour, or parenting.

ATTENTION HILLINGDON: A week programme to help develop children's attention, speech and listening skills.

STAY AND PLAY PLUS - A group to support parents of children with additional needs.

BABY MASSAGE: A 4-week course for babies aged 6 weeks - 6 months and their parents to learn soothing massage. Babies need to have had their 6-week check and 1st vaccination to attend.

BE INSPIRED: A programme for parents to develop their self-confidence.

TOILET TRAINING: Giving advice on how to toilet train your child.

SLEEP MATTERS: A workshop that provides sleep advice to families.

AUTISM PARENT SUPPORT GROUP: For parents that wish to find out more about ASD.

LANGUAGE FOR LIFE: A 4 Week programme that provides strategies to families to help develop their child's language skills.

BOTTLE TO CUP/ BRUSH FOR LIFE: Advice for good oral health and to support children to begin to use open cups and stop using bottles from 1 year.

ESOL - English speaking classes.

Please scan QR code below for further information and contact details.



Five to thrive champions



HILLINGDON
LONDON



www.hillingdon.gov.uk

Hillingdon Children's Centres

DAD'S STAY & PLAY

A fun filled Group for Dads,
Grandads and other male role
models...



10:00am –
11:30am
Please call to book

Cherry lane Children's
Centre
Sipson Road
West Drayton
UB7 9DL
01895 250 393

Yeading Children's
Centre
Carlyon Road
Hayes
UB4 0NR
01895 250 360

2nd Saturday of
every month

Last Saturday of
every month



Five to thrive
champions



www.hillingdon.gov.uk

Hillingdon Children's Centres

Autism Parent Support group

Support and advice group run by parents for parents and
carers of children any age, who have a diagnosis of Autism or
who are waiting for a diagnosis.

Attended regularly by professionals such as Speech and
Language, Families information Service, Psychologists, Doctors
from the CDC and other professionals to support with Autism.

Drop in session
from 9:30am – 11am
at Colham Manor Children's Centre
once per month.

*I honestly felt support in that room today! I couldn't be
any more thankful to you for keeping on at me to come as it's
definitely something I will be continuing. It was nice to talk and
actually be listened to, having people to relate with
situations". – Feedback from an attending parent.*

Please call centre for dates.



For more information, please contact Colham Manor Children's
Centre on 01895 250211



Five to thrive
champions



www.hillingdon.gov.uk

Late Arrivals and Collections

Our school day starts for Years 3-6 at 8.45am. Reception and Years 1 & 2 start at 8.50am.

If your child is late to school, please make sure they come to the main reception, so they can be signed in.

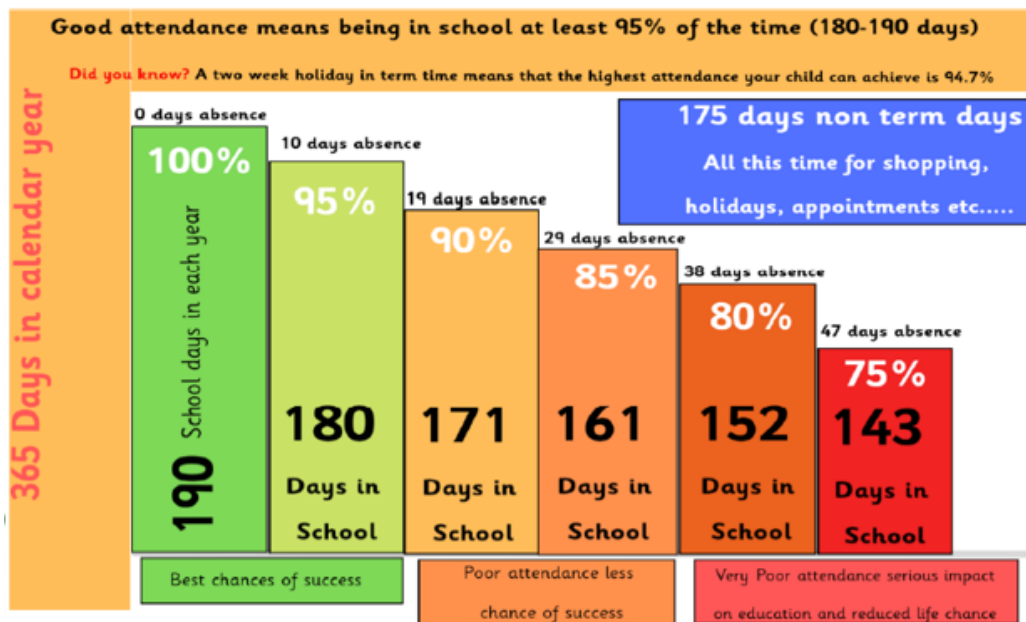
Learning starts at this time.

Arriving late will mean;

- Your child will miss out on important learning, which may affect their achievements.
- They don't get social time to settle into the class.
- It can be embarrassing for them.
- It may disrupt the learning of the rest of the class.

Reception, Y1 and Y2 finish at 3.20pm and Y3-6 finish at 3.25pm. Please make sure you are here on time to collect your child.

If you are running late, please call the school office so we can let the teacher know. If you are persistently late to collect your child, they will be placed into afterschool club and you will be charged.



Holiday requests during Term Time

A reminder to all parents that all holidays taken within school time will be unauthorised. We ask all parents to be mindful that taking a pupil on leave during term time interrupts teaching and learning and will disrupt a child's educational progress.

Requests should be made at least 4 school weeks in advance of the proposed absence, by completing a 'Leave of Absence' request form, explaining why the leave is essential and the reasons why it needs to take place during term time. This form is available from the Attendance Support Worker in the school office.

Well done!

W/E 07/06/2024

Attendance

Reception – Badgers 96%

KS1 – 97%

KS2 – 97%

Walking Bear (KS1)

1st – 2Z

Walking to school trophy (Year 3-5)

1st – 5C

Walking to school trophy (Year 6)

1st – 6C

Bookworms (KS1)

KS1 – 1G

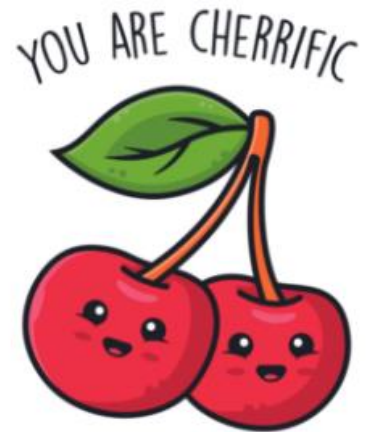
Super Stepper Winner

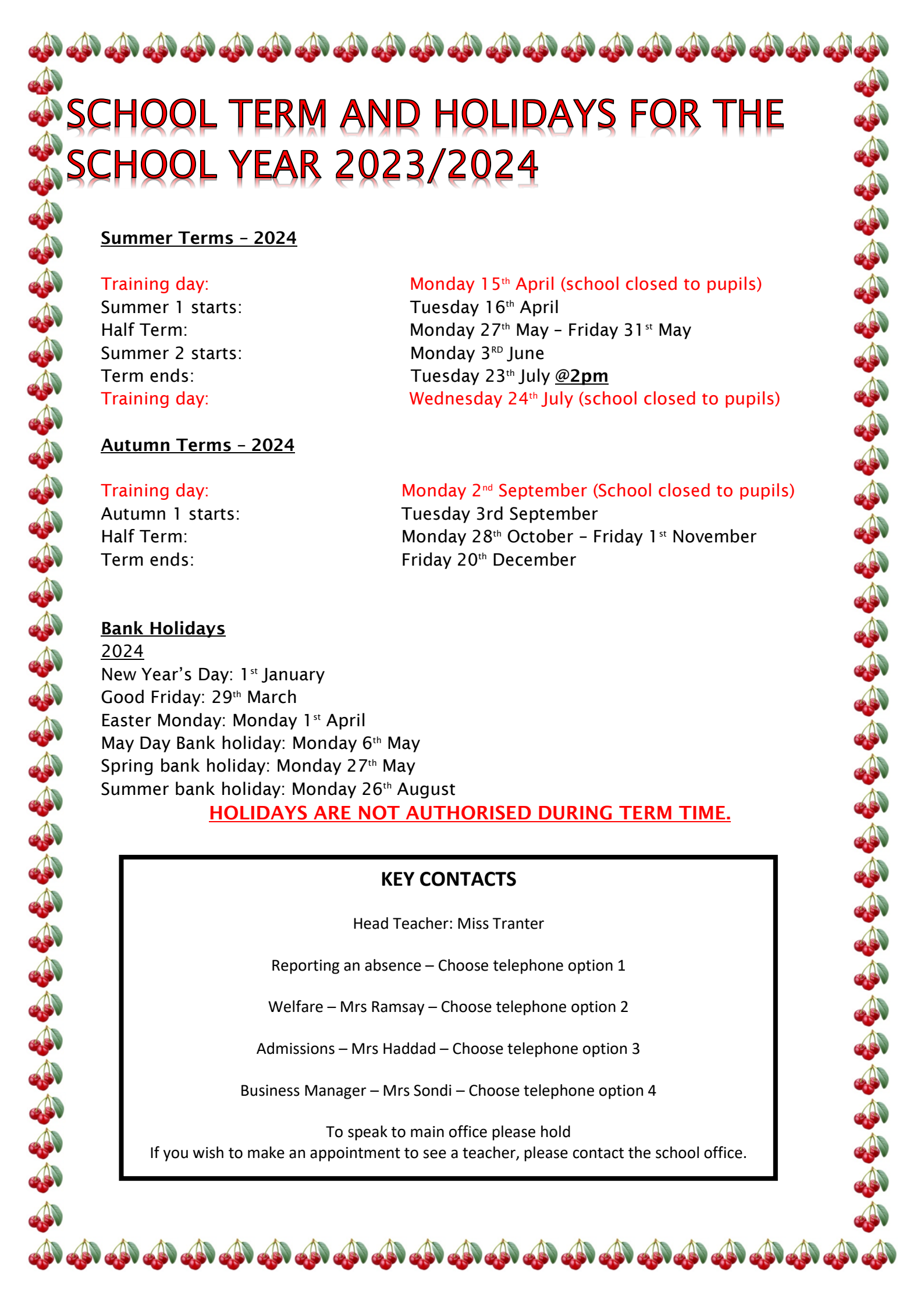
Reception / KS1 – 1P

KS2 – 3C

Housepoints

WINDSOR





SCHOOL TERM AND HOLIDAYS FOR THE SCHOOL YEAR 2023/2024

Summer Terms – 2024

Training day:	Monday 15 th April (school closed to pupils)
Summer 1 starts:	Tuesday 16 th April
Half Term:	Monday 27 th May – Friday 31 st May
Summer 2 starts:	Monday 3 RD June
Term ends:	Tuesday 23 th July @2pm
Training day:	Wednesday 24 th July (school closed to pupils)

Autumn Terms – 2024

Training day:	Monday 2 nd September (School closed to pupils)
Autumn 1 starts:	Tuesday 3 rd September
Half Term:	Monday 28 th October – Friday 1 st November
Term ends:	Friday 20 th December

Bank Holidays

2024

New Year's Day: 1st January
Good Friday: 29th March
Easter Monday: Monday 1st April
May Day Bank holiday: Monday 6th May
Spring bank holiday: Monday 27th May
Summer bank holiday: Monday 26th August

HOLIDAYS ARE NOT AUTHORISED DURING TERM TIME.

KEY CONTACTS

Head Teacher: Miss Tranter

Reporting an absence – Choose telephone option 1

Welfare – Mrs Ramsay – Choose telephone option 2

Admissions – Mrs Haddad – Choose telephone option 3

Business Manager – Mrs Sondi – Choose telephone option 4

To speak to main office please hold
If you wish to make an appointment to see a teacher, please contact the school office.