

# Cherry Lane Newsletter

Issue 25 W/E 24<sup>th</sup> May 2024

View our virtual tour <https://cherrylane.hillingdon.educatedmedia.co.uk/virtual-tour/>

## Dates for the Diary

### HALF TERM 27<sup>TH</sup> - 31<sup>ST</sup> MAY

Monday 3<sup>rd</sup> June- Back to school

Monday 3<sup>rd</sup>-14<sup>th</sup> June – **Year 4** Multiplication tests

Monday 3<sup>rd</sup> June – **Year 4** Police Workshop/Presentation – **Year 5** Internet safety presentation

Thursday 6<sup>th</sup> June – **Year 3&6** Police Workshop/Presentation

Thursday 6<sup>th</sup> June – **Year 2** Pedestrian training

## Police Parent Presentations

Monday 3<sup>rd</sup> June - Parent Presentation Internet safety presentation - 14:00-15:00 – **Open to all year group parents/guardians**

Drop in session Q&A 15:00-16:00 for parents unable to make main presentation

Thursday 6<sup>th</sup> June – **Year 5&6 Parent/Guardians presentation 14:15-15:15** – Child exploitation, grooming and country lines **\*\*Due to content discussed, please no children to be present\*\***

**\*\*Due to content discussed, please no children to be present\*\***

Drop in session Q&A 15:25-16:25 for parents unable to make main presentation **\*\*Due to content discussed, please no children to be present\*\***

**\*\*Due to content discussed, please no children to be present\*\***

## THE SCHOOL TRIP



## School Trips

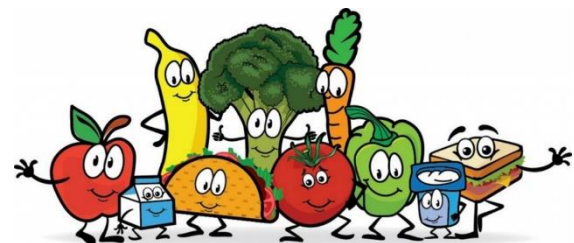
All of your children's school trips are now available to pay for via their parent pay account. You will see that the prices have increased quite a lot from last year. With this in mind we have given you an option of paying in instalments with a reducing balance. We appreciate that all trips are a voluntary contribution, however we cannot go ahead with the trip if we do not have enough money to cover the cost of the coaches and entry fees. If you have any concerns over paying for your child's trip please speak to the school office.



Joumana came 6th out of all the girls in the girl's race and Dante come 5th in the boy's race. A pleasing result considering that they didn't know the course and there was a hill thrown in.



**A message from our kitchen:** There is a lot of food going to waste. Please check with your child when ordering, that they like what is being offered. Also when a hot dinner has been ordered and a packed lunch is supplied that meal is then wasted. If your child wants a packed lunch, **PLEASE DO NOT** order a hot meal.



Our new Spring/Summer menu is now live on parent pay. You can book the entire term. Please do not forget to book before the cut off on Wednesdays. You can book all the way up until the end of the year.



**No nuts**

**No nut products**



Please remember when providing a packed lunch to your child not to include any nuts or products that may contain nuts. Thank you



The summer is on its way and we are all looking forward to spending lots of time outside – both during the lessons and play times. On very sunny days, we are not in a position to offer the protection of shade to every child so it is incredibly important that children bring their sun hats in to school every day.

We also ask that all children wear sun cream to school which is applied before they leave home in the morning – this will offer them protection during the school day. We are going to encourage the children to re-apply a small amount of lotion to key areas before going outdoors. This will be for their face, neck and arms. This is not replacing the first full application of the day which is put on at home. To enable staff to keep your child safe in the sun, please send into school a bottle of sun cream clearly labelled with your child's name and class.

We will also look at promoting other ways to stay safe, for example: wearing sun hats, sun glasses, drinking water (carrying water bottle) and staying in the shade.

Our children's safety is very important to us and working together we can make sure they are all protected when out in the sunny weather. Thank you in advance for your co-operation and support.

**Sun reminder- Sun hats, named sun cream, named water bottle. A google form has gone to new parents at Cherry Lane for sun cream consent form. Please check your emails, and submit completed form**

# Hay Fever Season

Did you know you do not need to see a doctor for **HAY FEVER** symptoms?

Clinical Commissioning Group

Community pharmacists can offer advice on how to avoid triggers and how to treat your hayfever.

You do not need a prescription for hayfever medicines. Many treatments are available for little cost from a community pharmacist.

For more information visit [www.nhs.uk](http://www.nhs.uk)



## Hay Fever Top Tips

Hay fever is an allergy to pollen. The pollen season usually runs from March to September. There are different types of pollen: tree, grass and weed and each pollen season occurs at a slightly different time. Hay fever sufferers may have an allergy to one or more types and can experience mild to extreme symptoms. Common symptoms include sneezing, itchy eyes and a runny or blocked nose. Here are some top tips to help ease symptoms:

- Stay indoors if the pollen count is very high.
- Keep doors and windows closed when possible.
- Carry a packet of tissues with you.
- Wearing sunglasses outside can help protect eyes from dust and pollen.
- Wash your hands if you have been outside.
- Try not to touch your face.
- Try not to rub itchy eyes.
- Eye drops or a cold compress can soothe itchy eyes.
- Anti-allergy medicine and nose drops can help ease symptoms.
- Petroleum jelly rubbed around the nostrils can help prevent pollen entering the nose.

There's currently no cure for hay fever. But most people can relieve symptoms with treatment, at least to a certain extent.

The most effective way to control hay fever would be to avoid exposure to pollen. However, it's very difficult to avoid pollen, particularly during the summer months.

Treatment options for hay fever include:

- Antihistamines – which help to prevent an allergic reaction
- Wear wraparound sunglasses to stop pollen getting in your eyes when you're outdoors
- Take a shower and change your clothes after being outdoors to remove the pollen on your body
- Stay indoors when the pollen count is high
- Apply a small amount of Vaseline to the nostrils to trap pollen

## Information for parents: Phonics screening check 2024



## Phonics screening check

### Do you have a child in year 1 at primary school?

If so, your child will take part in the phonics screening check in June.

The phonics screening check is a check of your child's phonics knowledge. It helps your school confirm whether your child is making the progress expected in the national curriculum.

With some exceptions, all pupils who have reached the age of 6 by the end of the school year must take the check during that academic year, including those in maintained nursery schools. For most pupils, this will be in year 1.

In 2024, the check will take place during the week commencing Monday 10 June.

### What is phonics?

Phonics is an effective way of teaching children to read. By ensuring high quality phonics teaching, we want to improve literacy levels and give all children a solid base to build on as they progress through school.

Through phonics, children are taught how to:

- recognise the sounds that each individual letter makes
- identify the sounds that different combinations of letters make, such as 'sh' or 'oo'
- blend these sounds together from left to right to make a word

Children can then use this knowledge to 'decode' new words that they hear or see. This is the first important step in learning to read.

### What is the phonics screening check?

The phonics screening check contains 40 words divided into two sections of 20 words. Both sections contain a mixture of real words and pseudo-words.

Pseudo-words are words that are phonically decodable but are not actual words with an associated meaning. They are included in the check specifically to assess whether your child can decode a word using their phonics skills.

All pseudo-words in the check are accompanied by a picture of an imaginary creature. Children are taught that when a word has a creature next to it, it is a pseudo-word. This ensures that they are not trying to match the pseudo-word to a word in their vocabulary.

The check is designed to give teachers information on how your child is progressing in phonics. It will help to identify whether your child needs additional support at this stage so that they do not fall behind in this vital early reading skill.

### Do I need to do anything to prepare my child for the check?

Phonics works best when children are given plenty of encouragement and learn to enjoy reading and books. Parents play a very important part in helping with this.

You can highlight the phonics sounds when you read with your child. Teaching how sounds match with letters is likely to start with individual letters such as 's', 'a' and 't' and will then move on to two-letter sounds such as 'ee', 'ch' and 'ck'.

With all books, encourage your child to 'sound out' unfamiliar words and then blend the sounds together from left to right rather than looking at the pictures to guess. Once your child has read an unfamiliar word, you can talk about what it means and help them to follow the story.

Your child's teacher will also be able to suggest books with the right level of phonics for your child. These books are often called 'decodable readers' because the story is written with words made up of the letters your child has learnt. Your child will be able to work out new words from their letters and sounds, rather than just guessing.

Most schools use book bags and a reading record, which is a great way for teachers and parents to communicate about what children have read. The reading record can tell you whether your child has enjoyed a particular book and shows problems or successes they have had, either at home or at school.

### How will the results be used?

Schools will have access to all their pupils' results to identify those who need additional support and make plans to help them improve.

The Department for Education does not publish school-level results for the phonics screening check, but schools will have access to *national, regional and local authority results* to allow them to benchmark their pupils' performance.

### Will I receive feedback on my child's check?

Your child's teacher will share your child's score with you in the second half of the summer term.

If your child has found the check difficult, the school should tell you what support they have put in place to help your child improve. You might like to ask how you can support your child to take the next steps in reading.

Children who have not met the standard in year 1 will re-take the check in year 2. The results of any re-take will also be shared with you.

### Further information

Your child's teacher will be able to answer any questions about the phonics screening check. For further details, you can also visit [www.gov.uk/STA](http://www.gov.uk/STA).

# Childhood Asthma

**FREE Online Workshops**

## Workshop Dates

ALL SESSIONS: 4PM - 5PM

Monday 3rd June

Monday 1st July

Monday 2nd September

CONTACT THE TEAM TO RESERVE  
YOUR PLACE

☎ 01895 543 437

✉ [nhsnwl.myhealth@nhs.net](mailto:nhsnwl.myhealth@nhs.net)

Scan the code to register  
your space

SCAN ME



## What's Included In The Workshop ?

What to do if your  
child is having an  
Asthma attack

Inhaler  
Techniques

Myth  
Busting

Common  
Triggers

Asthma  
Plans

Q&A

SESSIONS PRESENTED BY A HILLINGDON ASTHMA NURSE



**Sports Plus**  
Scheme

## SUMMER HALF TERM MULTI-SPORTS COURSE

@

**WEST DRAYTON ACADEMY**

**DODGEBALL HOCKEY FOOTBALL  
GYMNASTICS TENNIS CRICKET  
BASKETBALL ATHLETICS**



## Course Information

### What

Multi-Sports Course for all children aged 5-11. This course will focus on developing fundamental skills, learning new games, making friends and having FUN!!

### Where

West Drayton Academy, UB7 9EA

### When

Summer Half Term  
Tues 28th - Thurs 30th May  
9am - 3pm

### Cost

1 Day £20 | 2 Days £36 | 3 Days £48

Sibling discounts available!

### Need more Info?

T: 01932 568 570

E: [westlondon@sportsplusscheme.com](mailto:westlondon@sportsplusscheme.com)

**BOOK  
HERE!!**



## Late Arrivals and Collections

Our school day starts for Years 3-6 at 8.45am. Reception and Years 1 & 2 start at 8.50am.

**If your child is late to school, please make sure they come to the main reception, so they can be signed in.**

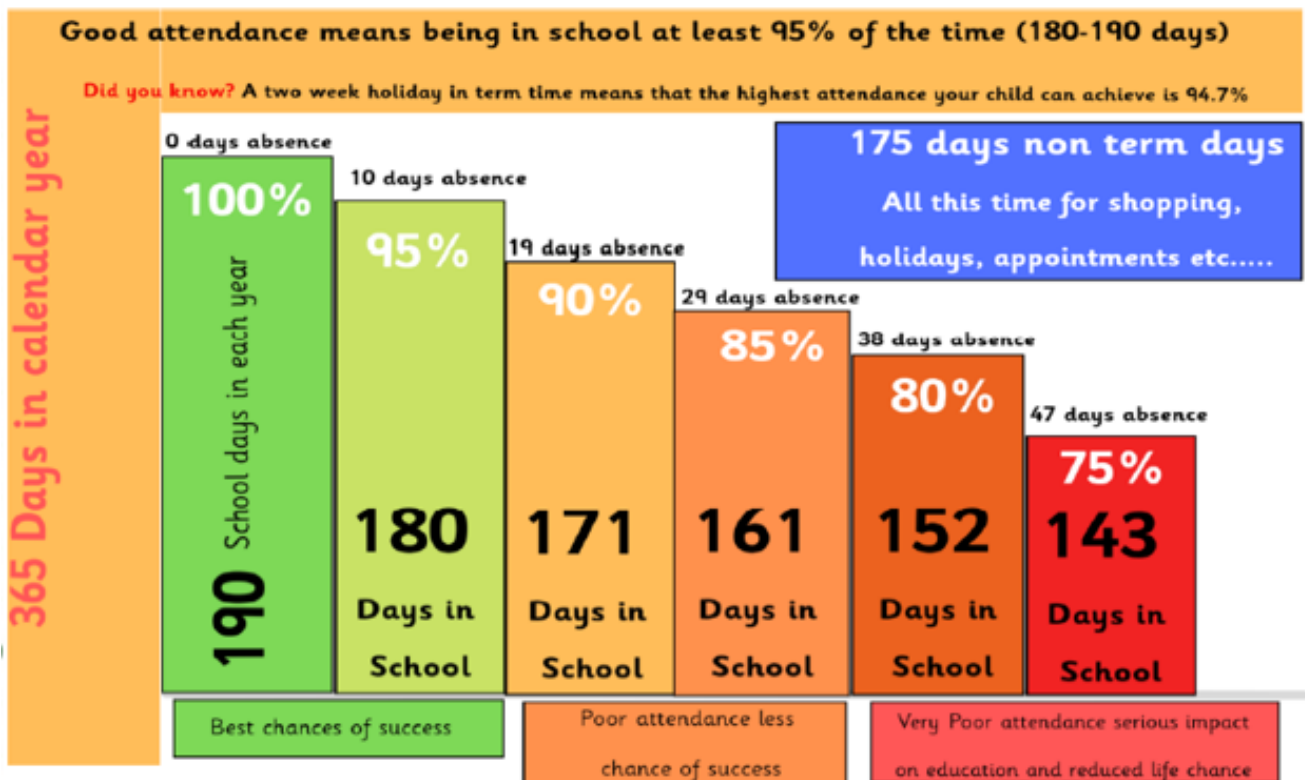
**Learning starts at this time.**

Arriving late will mean;

- Your child will miss out on important learning, which may affect their achievements.
- They don't get social time to settle into the class.
- It can be embarrassing for them.
- It may disrupt the learning of the rest of the class.

Reception, Y1 and Y2 finish at 3.20pm and Y3-6 finish at 3.25pm. Please make sure you are here on time to collect your child.

**If you are running late, please call the school office so we can let the teacher know. If you are persistently late to collect your child, they will be placed into afterschool club and you will be charged.**



# Well done!

W/E 10/5/24

**Attendance**

Reception –

KS1 –

KS2 –

**Walking Bear (KS1)**

1st – 1G

**Walking to school trophy (Year 3-5)**

1st -

**Walking to school trophy (Year 6)**

1st -

**Bookworms (KS1)**

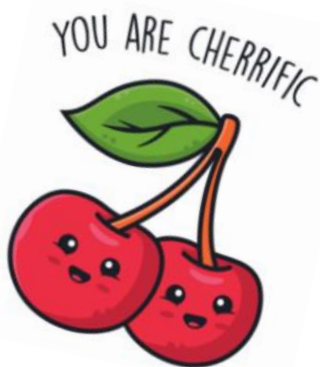
KS1 - 1G&1M

**Super Stepper Winner**

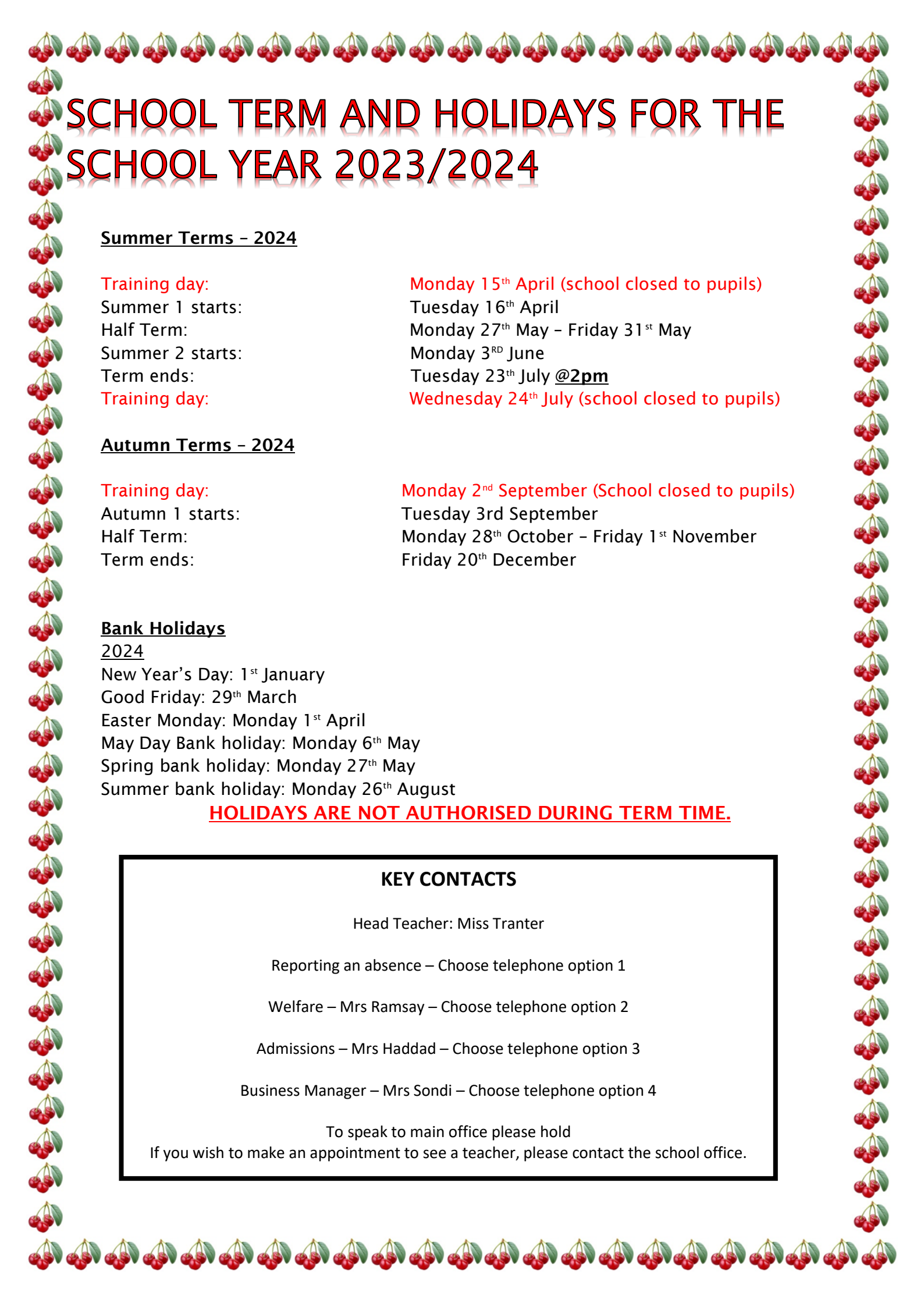
Reception / KS1 – 2R

KS2 -

**Housepoints**







# SCHOOL TERM AND HOLIDAYS FOR THE SCHOOL YEAR 2023/2024

## Summer Terms – 2024

Training day:	Monday 15 <sup>th</sup> April (school closed to pupils)
Summer 1 starts:	Tuesday 16 <sup>th</sup> April
Half Term:	Monday 27 <sup>th</sup> May – Friday 31 <sup>st</sup> May
Summer 2 starts:	Monday 3 <sup>RD</sup> June
Term ends:	Tuesday 23 <sup>th</sup> July @2pm
Training day:	Wednesday 24 <sup>th</sup> July (school closed to pupils)

## Autumn Terms – 2024

Training day:	Monday 2 <sup>nd</sup> September (School closed to pupils)
Autumn 1 starts:	Tuesday 3 <sup>rd</sup> September
Half Term:	Monday 28 <sup>th</sup> October – Friday 1 <sup>st</sup> November
Term ends:	Friday 20 <sup>th</sup> December

## Bank Holidays

2024

New Year's Day: 1<sup>st</sup> January  
Good Friday: 29<sup>th</sup> March  
Easter Monday: Monday 1<sup>st</sup> April  
May Day Bank holiday: Monday 6<sup>th</sup> May  
Spring bank holiday: Monday 27<sup>th</sup> May  
Summer bank holiday: Monday 26<sup>th</sup> August

**HOLIDAYS ARE NOT AUTHORISED DURING TERM TIME.**

### KEY CONTACTS

Head Teacher: Miss Tranter

Reporting an absence – Choose telephone option 1

Welfare – Mrs Ramsay – Choose telephone option 2

Admissions – Mrs Haddad – Choose telephone option 3

Business Manager – Mrs Sondi – Choose telephone option 4

To speak to main office please hold  
If you wish to make an appointment to see a teacher, please contact the school office.