

Cherry Lane Newsletter

Issue 2 W/E 20th September 2024

View our virtual tour <https://cherrylane.hillingdon.educatedmedia.co.uk/virtual-tour/>

Dates for the Diary

Wednesday 25th September – Dental nurse visit- Reception and Nursery

Thursday 26th September – Macmillan coffee morning – 8.30-9:45m

Thursday 21st November – Reception Open Morning for **2025 intake**-
10:00am

THINK BEFORE **PARK**
YOU

BE CONSIDERATE TO OUR NEIGHBOURS

YOU COULD ENDANGER A CHILD'S LIFE



SPONSORED BY



We encourage families to walk to school wherever possible and politely request that parents and visitors to the school park in surrounding roads with thought and consideration for the children, other adults and the local community. Please obey the restrictions in place and do not park in an obstructive manner.

Please think before you park!

- Walk to school if you can.
- If you have to come by car, try to share trips with neighbours or friends, observe the traffic regulations and park safely a short distance from the school to avoid congestion near to the school so that children can cross safely.
- Do not park, or wait, on the yellow 'KEEP CLEAR' markings. These markings are self-explanatory and are there to keep children safe.
- Do not block other people's driveways with your vehicle. This is classed as an unnecessary obstruction and could result in your vehicle being ticketed and even removed.
- Do not park blocking dropped kerbs. These are in place to allow access to wheelchairs/prams. Blocking these can will result in your vehicle being ticketed.

The safety of the children is our priority. Thank you to everyone that parks in a safe and considerate fashion.



Come along to our Coffee Morning

Dear Parents/Carers,

We would like to inform you that our school will be hosting the annual Macmillan Coffee Morning on Thursday 26th September 8:30-9:45am in the Dining Hall as part of the 'World's Biggest Coffee Morning'. This event is not only an opportunity to come together as a community but also a chance to contribute to a great cause.

To make this event a success, we kindly request families to bring in cakes, biscuits and chocolates to share with everyone. Please note these can be dropped off in advance at the school office. Additionally, we encourage you to donate for the charity as every contribution, no matter how big or small, will make a significant impact on the lives of those affected by cancer.

Our dedicated staff members will be available during the morning for a friendly chat. This is a fantastic occasion to connect with fellow parents, get to know our staff better, and most importantly show our support for a cause that affects so many lives.

Details of the Coffee Morning

Date: Thursday 26th September 2024

Time: 8:30-9:45am

Location: Cherry Lane Primary Dining Hall.

Your participation and generosity will help us make a meaningful contribution to Macmillan Cancer Support, and we look forward to sharing this special morning with you.

Thank you for your continued support.

[Schools placements and admissions - Hillingdon Council](#)

[Secondary-school-admissions-leaflet-2025.pdf](#)

A graphic for secondary school admissions featuring a purple school bag, a red alarm clock, a blue globe, a red apple, a blue flask with green liquid, a stack of books, and various school supplies like a pencil, paper clips, and a glue stick. The Hillingdon London coat of arms is at the bottom left.

Secondary School Admissions

Do you have a child born between
1 September 2013 and 31 August 2014?
If so, you must apply for a school place by
31 October 2024

For more information, key dates,
how to apply and advice, visit
www.hillingdon.gov.uk/schooladmissions
or email admissions@hillington.gov.uk



www.hillingdon.gov.uk

[School-admissions-brochure-2025 \(1\).pdf](#)

[Primary-school-admissions-leaflet-2025.pdf](#)

A graphic for starting primary school featuring a blue school bag, a red apple, a paint palette, a pencil, a ruler, a calculator, and other school supplies. The Hillingdon London coat of arms is at the bottom left.

Starting primary school

If you have a child born between
**1 September 2020
and 31 August 2021**
You must apply for a school place by
15 January 2025

For full details, key dates and
to apply online, visit
www.hillingdon.gov.uk/schooladmissions
or email
admissions@hillington.gov.uk



HILLINGDON
LONDON

www.hillingdon.gov.uk/schooladmissions

MEET THE VOLUNTEERS COFFEE MORNING



Find out more about how you could change
the lives of local families:

**HOME
START**
Hillingdon

Tues 24th Sept & Wed 2nd Oct
Coffee and drop in: 10:00 -12:00
Volunteer Talks at 11:00

Venue: Home-Start Hillingdon
306 Long Lane, UB10 9PE

Late Arrivals and Collections

Our school day starts for Years 3-6 at 8.45am. Reception and Years 1 & 2 start at 8.50am.

If your child is late to school, please make sure they come to the main reception, so they can be signed in.

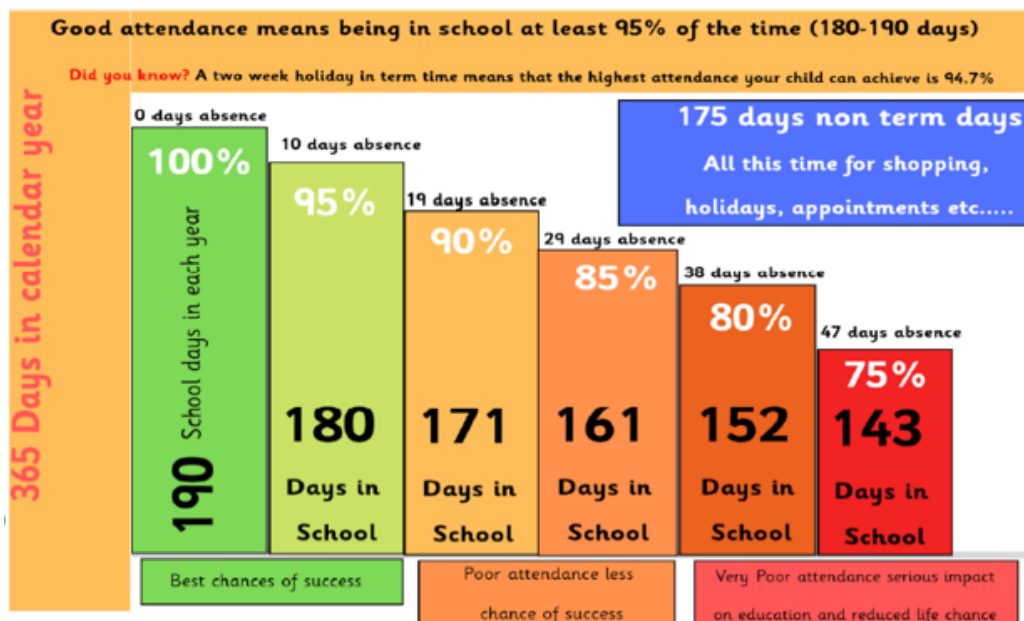
Learning starts at this time.

Arriving late will mean;

- Your child will miss out on important learning, which may affect their achievements.
- They don't get social time to settle into the class.
- It can be embarrassing for them.
- It may disrupt the learning of the rest of the class.

Reception, Y1 and Y2 finish at 3.20pm and Y3-6 finish at 3.25pm. Please make sure you are here on time to collect your child.

If you are running late, please call the school office so we can let the teacher know. If you are persistently late to collect your child, they will be placed into afterschool club and you will be charged.



Holiday requests during Term Time

A reminder to all parents that all holidays taken within school time will be unauthorised. We ask all parents to be mindful that taking a pupil on leave during term time interrupts teaching and learning and will disrupt a child's educational progress.

Requests should be made at least 4 school weeks in advance of the proposed absence, by completing a 'Leave of Absence' request form, explaining why the leave is essential and the reasons why it needs to take place during term time. This form is available from the school office.

CONGRATULATIONS WELL DONE!

W/E 20/09/24



Attendance

Reception – Badgers 97%

KS1 – 2Z 96%

KS2 – 3C 97%

Walking Bear (KS1)

1st – 1V

Walking to school trophy (Year 3-5)

1st – 4G

Walking to school trophy (Year 6)

1st – 6S & 6F

Bookworms (KS1)

KS1 – 2M

Super Stepper Winner

Reception / KS1 – 2M

KS2 - 4G

Housepoints

Syon





SCHOOL TERM AND HOLIDAYS FOR THE SCHOOL YEAR 2023/2024

Autumn Term - 2024

Training Day:	Monday, 2 nd September (school closed to pupils)
Autumn 1 starts:	Tuesday, 3 rd September
Half term:	Monday, 28 th October to Friday, 1 st November
Training Day:	Monday, 4 th November (school closed to pupils)
Autumn 2 starts:	Tuesday 5 th November
Term ends:	Friday, 20 th December @2pm

Spring Term - 2025

Spring 1 starts:	Monday, 6 ^h January
Half term:	Monday, 17 th February to Friday, 21 st February
Spring 2 starts:	Monday 24 th February
Term ends:	Friday, 4 th April

Summer Term - 2025

Summer 1 starts:	Tuesday 22 nd April
Half term:	Monday, 26 th May to Friday, 30 th May
Summer 2 starts:	Monday 2 nd June
Term ends:	Tuesday 22 rd July

(3 additional Teacher Training Days are to be confirmed)

Bank Holidays

2024

Christmas Day: Wednesday, 25th December
Boxing Day: Thursday, 26th December

2025

New Year's Day: Wednesday, 1st January
Good Friday: Friday 18th April
Easter Monday: Monday, 21st April
May Day Bank Holiday: Monday, 5th May
Spring Bank Holiday: Monday 26th May
Summer Bank Holiday: Monday 25th August

HOLIDAYS ARE NOT AUTHORISED DURING TERM TIME



KEY CONTACTS

Head Teacher: Miss Tranter

Reporting an absence – Choose telephone option 1

Welfare – Mrs Ramsay – Choose telephone option 2

Admissions – Mrs Haddad – Choose telephone option 3

Business Manager – Mrs Sondi – Choose telephone option 4

To speak to main office please hold

If you wish to make an appointment to see a teacher, please contact the school office.