

# Cherry Lane Newsletter



Issue 12 W/E 17<sup>th</sup> January 2025

View our virtual tour <https://cherrylane.hillingdon.educatedmedia.co.uk/virtual-tour/>

## Dates for the Diary-January

- Monday 6<sup>th</sup> January – Children back to school
- Monday 13<sup>th</sup> January – Year 5 History workshop
- Wednesday 15<sup>th</sup> January – Year 3&4 (Selected Pupils) Author Visit
- Monday 27<sup>st</sup> January – Reception Hearing and Vision tests
- Monday 27<sup>th</sup> January – Year 6 Mock SAT's week
- Thursday 30<sup>th</sup> January – Coffee Morning

## Coffee and cake With Hillingdon PCF

Hillingdon PCF are returning for another coffee morning for Parent carers of neurodivergent/SEND children as part of the ongoing PINS Project

### CHERRY LANE PRIMARY SCHOOL

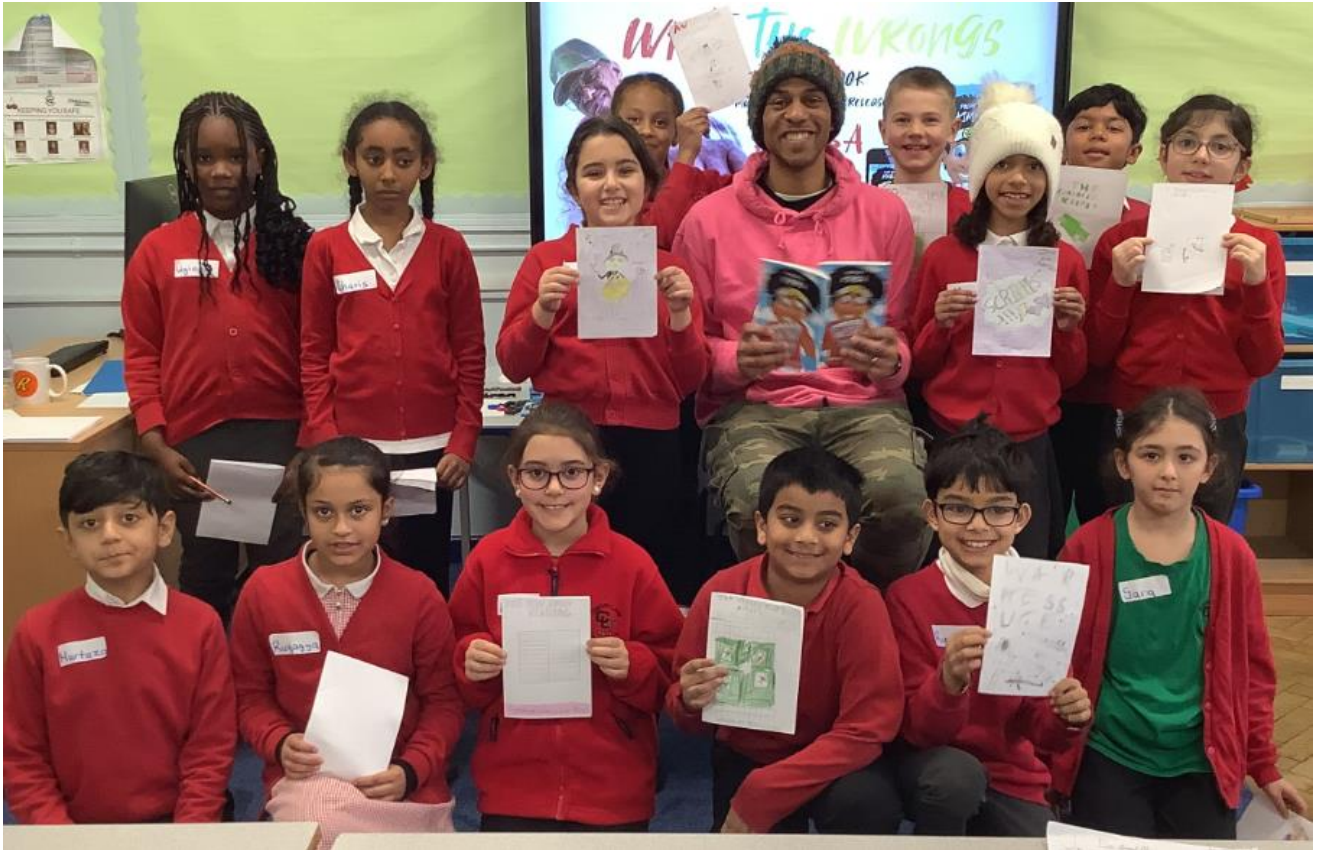
Thursday 30th January 2025

9:00am

Please come along for an informal chat with Nicola and Louise, who will also have some goody bags to hand out.



Author, poet and rapper Kimba Bush visited some year 3 and 4 pupils. They created some beautiful pieces of work and thoroughly enjoyed themselves.



## Family Fun Day

Pug Yard Learning Centre, Windsor Castle, St Albans Street, Windsor.

Tuesday, 18<sup>th</sup> February 2025

10:00 - 14:00

***Booking is necessary. Note: no entry to The Castle (closed)***

We extend an invitation to all families to join us this February half-term for our free Family Fun Day.

Children can enjoy some creative crafting at the Castle's Learning Centre and even make a memento to take away.

We will also have costume handling workshops during the day for the children to dress up as historical characters and take part in a code-breaking treasure hunt in the Pug Yard.

Why not bring a picnic to enjoy and make a day of it?

<https://tickets.rct.uk/product/11/5474>

# GIRLS MINI DEVELOPMENT SESSIONS

Introduction and Development

Two week free trial!

SATURDAYS  
10 - 11AM

REC - YEAR 4  
(U5 - U9)

Be Tweedale in the Summer: Breakspear in the Winter

Summer Address  
Tweedale Grove  
Playing Fields  
Ickenham  
UB10 8TT



Winter Address  
The Breakspear School  
Bushey Road  
Ickenham  
UB10 8JA

Pathway to Girls league football

To register your lioness email [Girls@ickenhamyouthfc.com](mailto:Girls@ickenhamyouthfc.com)

# SEND INDOOR FOOTBALL SESSIONS

SEND



For children with special educational needs and disabilities

Have fun, make friends, play football

Wednesdays  
5:30pm - 6:30pm

Ages under 5 to under 12

Glebe Primary School  
Sussex Road  
Ickenham  
UB10 8PH

FREE TRIAL

For more information and to register email [welfare@ickenhamyouthfc.com](mailto:welfare@ickenhamyouthfc.com)

WEALDSTONE YOUTH FC

# SEND FOOTBALL SESSIONS

REC - YEAR 6  
(U5 - U11'S)

SATURDAYS  
10AM - 11AM

Be Goals in the Winter and The Vale in the Summer

SCAN TO BOOK



- ✓ DESIGNED FOR CHILDREN WITH SPECIAL EDUCATIONAL NEEDS AND DISABILITIES
- ✓ A FUN AND SAFE ENVIRONMENT TO SHINE

2 week free trial!

To register your interest email [soccer.school@wealdstoneyouthfc.co.uk](mailto:soccer.school@wealdstoneyouthfc.co.uk)

WEALDSTONE YOUTH FC

# GIRLS FOOTBALL SESSIONS

REC - YR 6 (U5 - U11)  
SATURDAYS 9 - 10 AM

Be Goals in the Winter and The Vale in the Summer

- ✓ Ball technique
- ✓ Teamwork
- ✓ Potential pathway to WYFC



2 week free trial!

To register your interest email [soccer.school@wealdstoneyouthfc.co.uk](mailto:soccer.school@wealdstoneyouthfc.co.uk)

## Late Arrivals and Collections

Our school day starts for Years 3-6 at 8.45am. Reception and Years 1 & 2 start at 8.50am.

**If your child is late to school, please make sure they come to the main reception, so they can be signed in.**

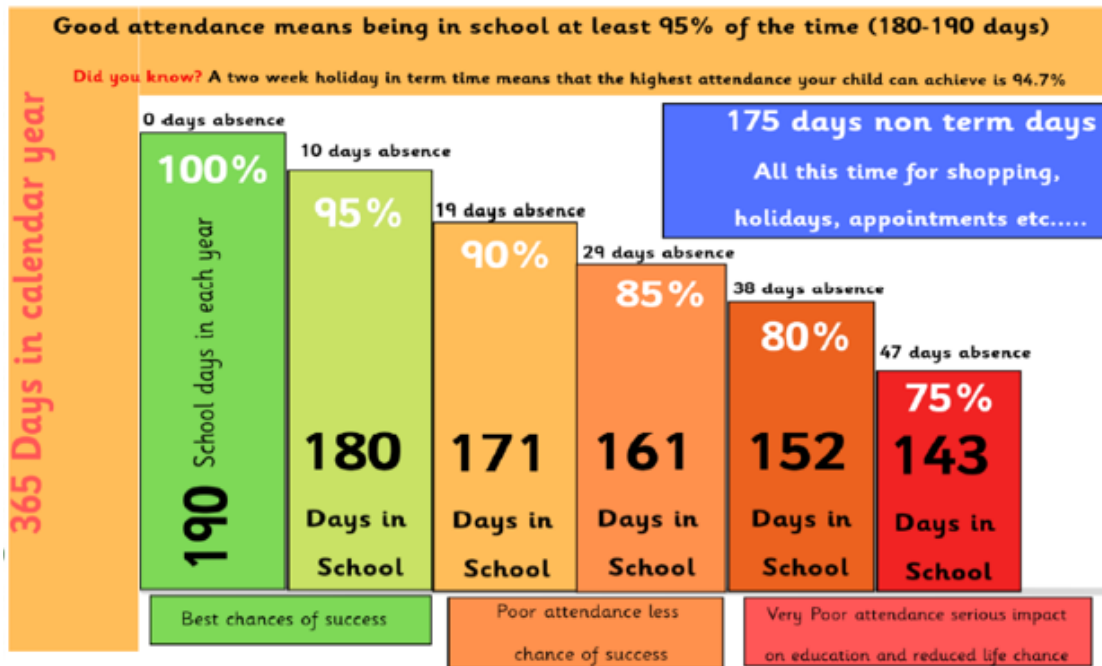
**Learning starts at this time.**

Arriving late will mean;

- Your child will miss out on important learning, which may affect their achievements.
- They don't get social time to settle into the class.
- It can be embarrassing for them.
- It may disrupt the learning of the rest of the class.

Reception, Y1 and Y2 finish at 3.20pm and Y3-6 finish at 3.25pm. Please make sure you are here on time to collect your child.

**If you are running late, please call the school office so we can let the teacher know. If you are persistently late to collect your child, they will be placed into afterschool club and you will be charged.**



## Holiday requests during Term Time

A reminder to all parents that all holidays taken within school time will be unauthorised. We ask all parents to be mindful that taking a pupil on leave during term time interrupts teaching and learning and will disrupt a child's educational progress.

Requests should be made at least 4 school weeks in advance of the proposed absence, by completing a 'Leave of Absence' request form, explaining why the leave is essential and the reasons why it needs to take place during term time. This form is available from the school office.

# CONGRATULATIONS WELL DONE!

YOU ARE CHERRIFIC



W/E 17/01/25

## Attendance

Reception – Badgers 92%

KS1 – 2Z 94%

KS2 – 6F 96%

YOU ARE CHERRIFIC



## Walking Bear (Year 1 & 2)

1st – 2M

## Walking to school trophy (Year 3-5)

1st – 5T & 3C

## Walking to school trophy (Year 6)

1st – 6S

## Bookworms (KS1)

KS1 – 1H

## Super Stepper Winner

Reception / KS1 – 2J

KS2 – 6S

House points



# SYON



# SCHOOL TERM AND HOLIDAYS FOR THE SCHOOL YEAR 2024/2025

## Autumn Term - 2024

Training Day:	Monday, 2 <sup>nd</sup> September <b>(school closed to pupils)</b>
Autumn 1 starts:	Tuesday, 3 <sup>rd</sup> September
Half term:	Monday, 28 <sup>th</sup> October to Friday, 1 <sup>st</sup> November
Training Day:	Monday, 4 <sup>th</sup> November <b>(school closed to pupils)</b>
Autumn 2 starts:	Tuesday 5 <sup>th</sup> November
Term ends:	Friday, 20 <sup>th</sup> December @2pm

## Spring Term - 2025

Spring 1 starts:	Monday, 6 <sup>h</sup> January
Half term:	Monday, 17 <sup>th</sup> February to Friday, 21 <sup>st</sup> February
Training Day:	Monday 24 <sup>th</sup> February <b>(school closed to pupils)</b>
Spring 2 starts:	Tuesday 25 <sup>th</sup> February
Term ends:	Friday, 4 <sup>th</sup> April

## Summer Term - 2025

Training day:	Tuesday 22 <sup>nd</sup> April <b>(school closed to pupils)</b>
Summer 1 starts:	Wednesday 23 <sup>rd</sup> April
Half term:	Monday, 26 <sup>th</sup> May to Friday, 30 <sup>th</sup> May
Summer 2 starts:	Monday 2 <sup>nd</sup> June
Term ends:	Tuesday 22 <sup>nd</sup> July

**(1 additional Teacher Training Day to be confirmed)**

## Bank Holidays

### 2024

Christmas Day: Wednesday, 25<sup>th</sup> December  
Boxing Day: Thursday, 26<sup>th</sup> December

### 2025

New Year's Day: Wednesday, 1<sup>st</sup> January  
Good Friday: Friday 18<sup>th</sup> April  
Easter Monday: Monday, 21<sup>st</sup> April  
May Day Bank Holiday: Monday, 5<sup>th</sup> May  
Spring Bank Holiday: Monday 26<sup>th</sup> May  
Summer Bank Holiday: Monday 25<sup>th</sup> August

**HOLIDAYS ARE NOT AUTHORISED DURING TERM TIME**



## KEY CONTACTS

Head Teacher: Miss Tranter

Reporting an absence – Choose telephone option 1

Welfare – Mrs Ramsay – Choose telephone option 2

Admissions – Mrs Haddad – Choose telephone option 3

Business Manager – Mrs Sondi – Choose telephone option 4

To speak to main office please hold  
If you wish to make an appointment to see a teacher, please contact the school office.