

Cherry Lane Newsletter

Issue 1 W/E 6th September 2024

View our virtual tour <https://cherrylane.hillingdon.educatedmedia.co.uk/virtual-tour/>

WELCOME
**BACK TO**
SCHOOL

Dates for the Diary

Monday 2nd September – Training day (school closed to pupils)

Tuesday 3rd September – Back to school

Monday 9th – 18th September – Scarf Life Base workshops

On behalf of the staff at Cherry Lane Primary School, welcome back to everyone, it is the beginning of a new school year and a fresh start for everyone. I hope you all had a lovely summer break. Welcome to our new children and parents.

The children look very smart in their school uniform, thank you for making such an effort with this.

Reminders:

- School begins promptly at: Nursery AM-8:30-11:30, Nursery PM-12:30-3:30, Nursery all day 8:30-3:30, KS1-8:50-3:20, KS2-8:45-3:25. **Please ensure your child is on time for school.**
- If your child attends Breakfast Club, it starts at 7:45am. Please DO NOT drop your children off before this time.
- Extra-curricular clubs are due to start next week.
- Please do not forget to book your child's lunch via ParentPay. They need to be book before Wednesday for the following week. If you miss the cut off please contact office first thing on Thursday and we can accommodate, otherwise you will need to provide packed lunch.
- Please remember breakfast club **MUST** be booked and paid for in advance via ParentPay. The cut off for booking in the evening before. There is a £2 charge per child per day. Children will have the option to have a healthy breakfast of either toast or cereal. **Please make sure you clear current debt.**
- Please can you name all uniform, especially jumpers and cardigans!

We use ParentPay to send text messages and emails updating parents, please make sure you're mobile number is correct on your ParentPay account.

If you're mobile number is missing or incorrect you will not receive any urgent notifications from us.

Please note children should not be dropped off into the playground on their own. The playground is not staffed the children **will not** be supervised. If your child is found in the playground, they will be placed in breakfast club and you will be charged.

School uniform

Boys: Red jumper or sweatshirts, white shirt or polo shirt, grey or black trousers, black school shoes.

Girls: Red cardigan, jumper or sweatshirt, white shirt or polo shirt, grey or black skirt, pinafore or trousers, black school shoes. For Summer Term a red and white check dress can be worn

School Uniform Ordering – [Cherry Lane Primary School* Uniform \(schooltrends.co.uk\)](http://Cherry Lane Primary School* Uniform (schooltrends.co.uk))

	PE Kit - Key Stage 1	PE Kit - Key Stage 2
Indoors	White t-shirt and black shorts	Black shorts and house colour t-shirt
Outdoor	White t-shirt, black shorts, plimsolls or trainers in a kit bag marked with your child's name	Black shorts and house colour t-shirt, plimsolls or trainers in a kit bag marked with your child's name Coloured PE Tops have to be ordered in child's house colour: Windsor Castle (Red) / Syon Park (Green) / Hampton Court (Blue) Gunnersbury Park (Yellow)

PE Days:

Nurseys All Day- Friday

Badgers (RS) - Tuesday

Hedgehogs (RU) - Monday

Rabbits (RN) - Thursday

1V – Tuesday & Friday

1A – Monday & Friday

1H – Monday & Friday

2J – Monday & Wednesday

2M – Tuesday & Wednesday

2Z – Wednesday & Thursday

PE Days:

3C - Tuesday & Wednesday

3S - Tuesday & Wednesday

3D - Monday & Thursday

4R - Wednesday & Thursday

4RC - Monday & Thursday

4G - Wednesday & Thursday

5T - Wednesday & Thursday

5C - Tuesday & Thursday

5M - Monday & Friday

6C – Monday & Tuesday

6S – Tuesday & Friday

6F – Wednesday & Friday



Year 6 PGL News

Wednesday 19th to Friday 21st March 2025

Next year's residential activity centre will be held at PGL Liddington, Swindon. Cherry Lane have enjoyed many trips there in the past and are very excited to be returning. There will be a variety of exciting activities to engage the children, all supervised by fully trained members of staff.

Children who attend these residential trips learn so much and benefit greatly in so many ways. We see the children who go to PGL grow emotionally, become more independent, and gain confidence and self-esteem.

As this is such an extremely valuable experience for the children the School Governors have once again agreed to help in the funding of this trip to help to reduce the cost to parents.

The cost to parents/carers will be £250 for the trip, including accommodation, all meals, travel by coach and all activities.

Families will have the opportunity to pay in full or in instalments via their child's ParentPay account or pay cash using the Paypoint facility available through local stores using the barcode at the bottom of this letter.

If you are interested in your child taking part in the residential week next year please ensure that you pay the £40 non-refundable deposit by Friday 13th September. This deposit payment will secure your child's place, without it we are unable to guarantee a place will be available

Payment schedule:

£40 Deposit by 13th September

£40 Instalment 2	by 1st October
£40 Instalment 3	by 1st November
£40 Instalment 4	by 1st December
£45 Instalment 5	by 1st January
£45 Instalment 6	by 1st February

address: 30, Oxford Road, Denham. UB9 4DQ

email: hillingdonfoodbank@kingsborough.org.uk

mobile: 07859710747

charity no: 1148148



URGENTLY NEEDED

**Help donate to Hillingdon Foodbank.
we have supported 9842 people
from Jan – June 2024**

We need ;

- Tinned Potatoes
- Noodles
- Tinned Beans
- Tinned Fruits
- Tinned Spaghetti
- Long-life Milk
- Long-life Juice
- Tea/ Coffee
- Biscuits/ treats
- Tinned meat
- Toiletries
- Cereal
- Sugar
- Jam/Bread spread
- Tinned vegetables
- Puddings
- Condiments



THANK YOU

PENALTY NOTICE FINES FOR SCHOOL ATTENDANCE IS CHANGING

FIRST OFFENCE

1

The first time a Penalty Notice is issued for Term Time Leave or irregular Attendance the amount will be:

£160 per parent, per child if paid within 28 days
Reduced to £80 per parent, per child if paid within 21 days.

2

SECOND OFFENCE (WITHIN 3 YEARS)

The second time a Penalty Notice is issued for Term Time Leave or Irregular Attendance the amount will be:

£160 per parent, per child to be paid within 28 days. No reduced rate will be offered.

The following changes will come into force for Penalty Notice Fines issued after **19th August 2024**.

3

THIRD OFFENCE AND ANY FURTHER OFFENCES (WITHIN 3 YEARS)

The third time an offence is committed for Term Time Leave or Irregular Attendance a Penalty Notice will not be issued, and the case will be presented straight to the Magistrates' Court. Magistrates' fines can be up to £2500 per parent, per child.

Cases found guilty in Magistrates' Court can show on a Parents future DBS certificate, due to failure to safeguard a child's education'.

10 SESSIONS (5 DAYS) OF UNAUTHORISED ABSENCE IN A 10-WEEK PERIOD

Penalty Notice Fines will be considered when there has been 10 sessions of unauthorised absence in a 10-week period.

Late Arrivals and Collections

Our school day starts for Years 3-6 at 8.45am. Reception and Years 1 & 2 start at 8.50am.

If your child is late to school, please make sure they come to the main reception, so they can be signed in.

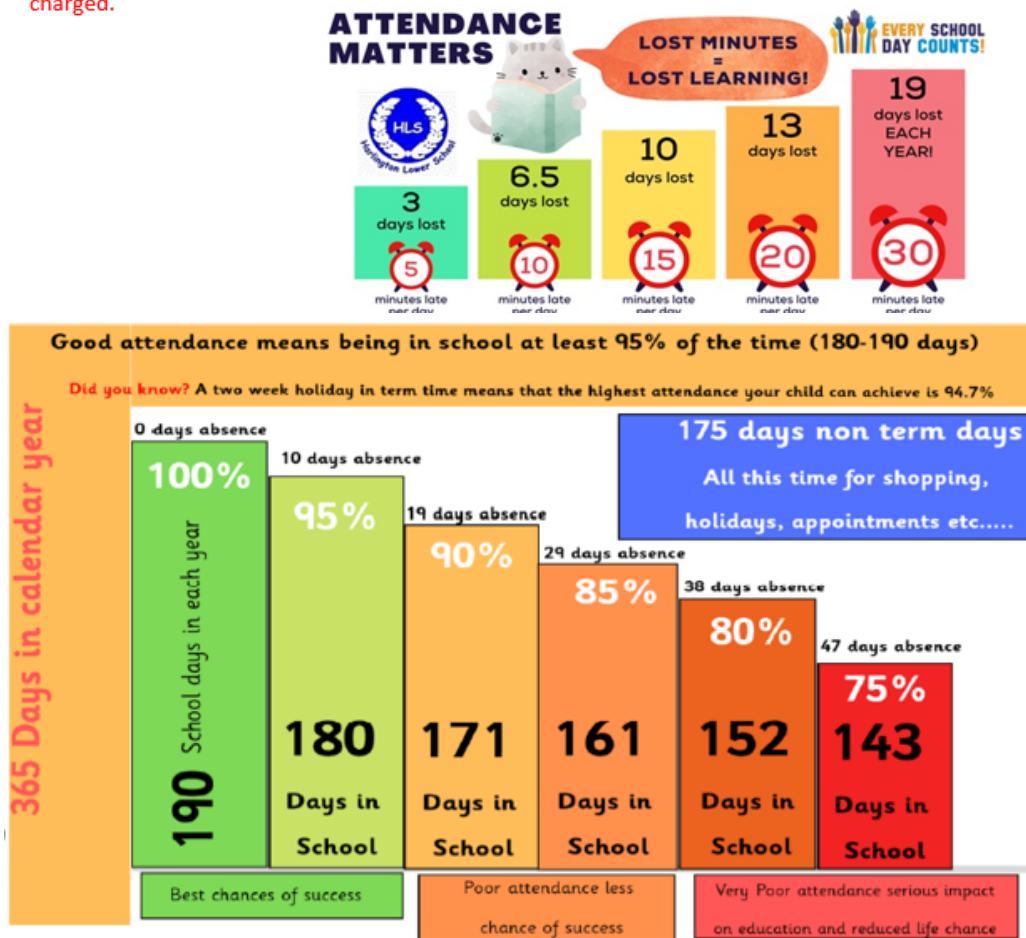
Learning starts at this time.

Arriving late will mean;

- Your child will miss out on important learning, which may affect their achievements.
- They don't get social time to settle into the class.
- It can be embarrassing for them.
- It may disrupt the learning of the rest of the class.

Reception, Y1 and Y2 finish at 3.20pm and Y3-6 finish at 3.25pm. Please make sure you are here on time to collect your child.

If you are running late, please call the school office so we can let the teacher know. If you are persistently late to collect your child, they will be placed into afterschool club and you will be charged.



Holiday requests during Term Time

A reminder to all parents that all holidays taken within school time will be unauthorised. We ask all parents to be mindful that taking a pupil on leave during term time interrupts teaching and learning and will disrupt a child's educational progress.

Requests should be made at least 4 school weeks in advance of the proposed absence, by completing a 'Leave of Absence' request form, explaining why the leave is essential and the reasons why it needs to take place during term time. This form is available from the school office.



SCHOOL TERM AND HOLIDAYS FOR THE SCHOOL YEAR 2023/2024

Autumn Term - 2024

Training Day:	Monday, 2 nd September (school closed to pupils)
Autumn 1 starts:	Tuesday, 3 rd September
Half term:	Monday, 28 th October to Friday, 1 st November
Training Day:	Monday, 4 th November (school closed to pupils)
Autumn 2 starts:	Tuesday 5 th November
Term ends:	Friday, 20 th December @2pm

Spring Term - 2025

Spring 1 starts:	Monday, 6 ^h January
Half term:	Monday, 17 th February to Friday, 21 st February
Spring 2 starts:	Monday 24 th February
Term ends:	Friday, 4 th April

Summer Term - 2025

Summer 1 starts:	Tuesday 22 nd April
Half term:	Monday, 26 th May to Friday, 30 th May
Summer 2 starts:	Monday 2 rd June
Term ends:	Tuesday 22 rd July

(3 additional Teacher Training Days are to be confirmed)

Bank Holidays

2024

Christmas Day: Wednesday, 25th December
Boxing Day: Thursday, 26th December

2025

New Year's Day: Wednesday, 1st January
Good Friday: Friday 18th April
Easter Monday: Monday, 21st April
May Day Bank Holiday: Monday, 5th May
Spring Bank Holiday: Monday 26th May
Summer Bank Holiday: Monday 25th August

HOLIDAYS ARE NOT AUTHORISED DURING TERM TIME



KEY CONTACTS

Head Teacher: Miss Tranter

Reporting an absence – Choose telephone option 1

Welfare – Mrs Ramsay – Choose telephone option 2

Admissions – Mrs Haddad – Choose telephone option 3

Business Manager – Mrs Sondi – Choose telephone option 4

To speak to main office please hold
If you wish to make an appointment to see a teacher, please contact the school office.